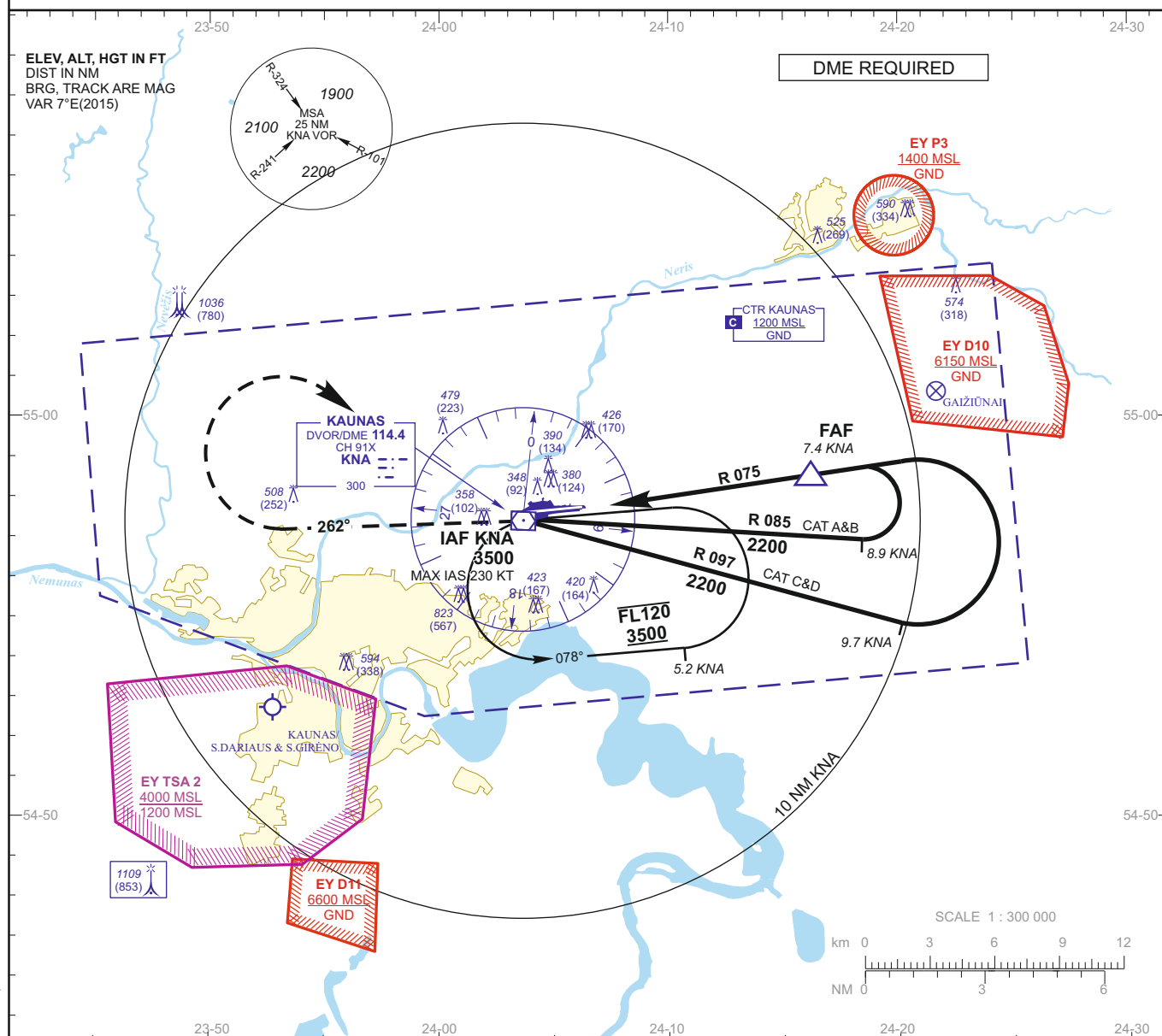
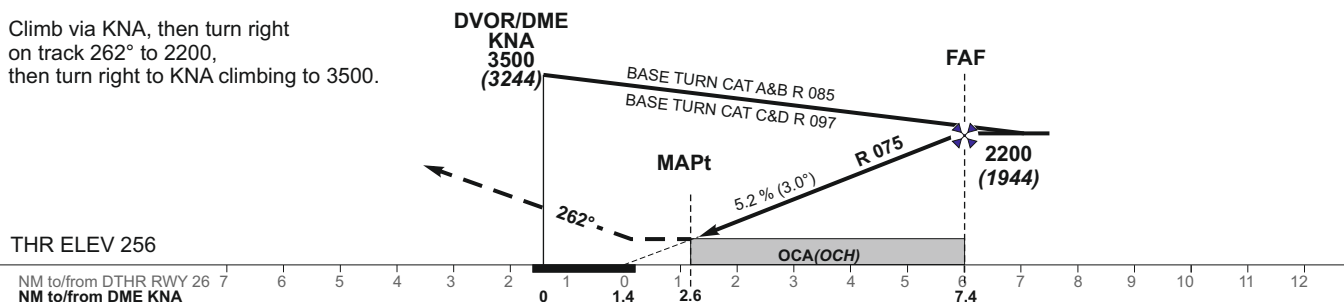


INSTRUMENT APPROACH
CHART - ICAOAERODROME ELEV 256
HEIGHTS RELATED TO
THR RWY 26 - ELEV 256TWR 124.200
118.500
ATIS 129.050KAUNAS
VOR RWY 26

MISSED APPROACH PROCEDURE

Climb via KNA, then turn right
on track 262° to 2200,
then turn right to KNA climbing to 3500.

TRANSITION ALT 5000



OCA(OCH)		A	B	C	D	DIST DME KNA		7	6	5	4	3		
STRAIGHT-IN APPROACH	VOR/DME	690 (434)				Altitude		2090	1770	1460	1140	820		
						Height		(1834)	(1514)	(1204)	(884)	(564)		
CIRCLING		see EYKA-AD-2.24-40 - 1				Timing not authorized for defining the MAPt								
Remark:						GS		Kts	80	100	120	140	160	180
						FAF-MAPt 4.8 NM		min:sec	3:36	2:53	2:24	2:03	1:48	1:36
						Rate of descent		ft/min	415	520	625	730	835	940
						For data tabulation see verso								

Changes: lateral and vertical limits of EY D10; IAF KNA and HLDG ALT; Missed approach procedure; base turn.

KAUNAS
RWY 26

AERONAUTICAL DATA TABULATION

VOR INSTRUMENT APPROACH from IAFs(KNA DVOR/DME, NASAP, REGLU)	
FIX/POINTS	COORDINATES
NASAP (IAF) - BRG 235.41° / 15.74 NM KNA	55 04 57.2N 024 28 10.6E
REGLU (IAF) - BRG 287.26° / 14.79 NM KNA	54 51 37.2N 024 27 23.7E
KNA DVOR/DME (IAF)	54 57 37.4N 024 03 59.1E
FAF - BRG 255.20° / 7.37 NM KNA	54 58 38.2N 024 16 39.3E
MAPt - BRG 255.20° / 2.59 NM KNA	54 57 59.0N 024 08 26.5E
THR RWY 26	54 57 54.62N 024 06 36.27E
DTHR RWY 26	54 57 53.80N 024 06 19.76E
Final approach descent angle: 2.98°	